



US Army Corps of Engineers
BUILDING STRONG®

Ida Advisory #5

For Planning Purposes Only!

WASHINGTON, DC
12:27:09
27 Aug 2021

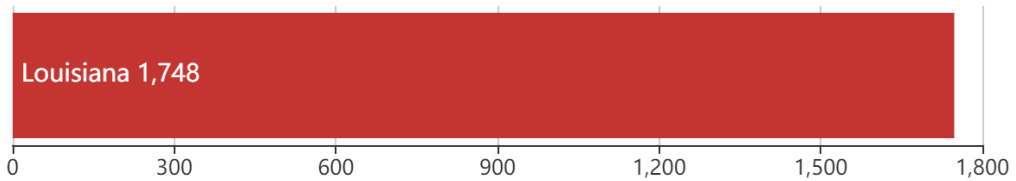
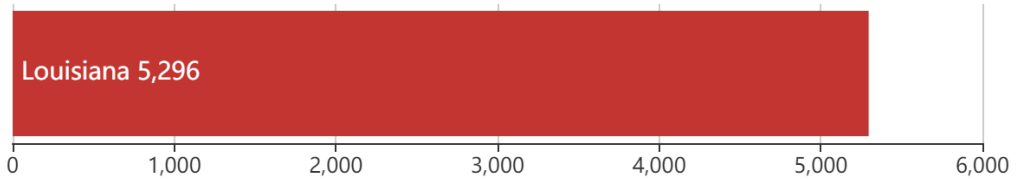
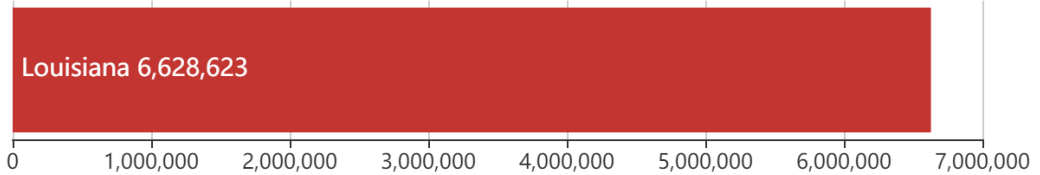
CHICAGO
11:27:09
27 Aug 2021

LOS ANGELES
09:27:09
27 Aug 2021

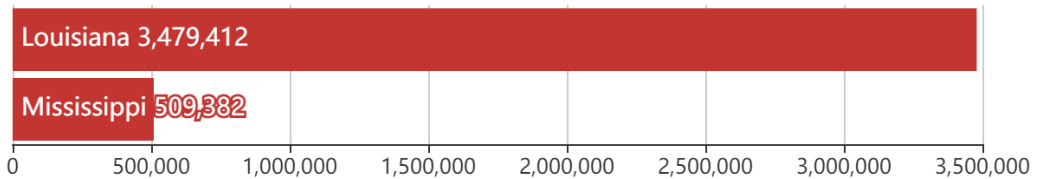
<https://go.usa.gov/xFumG>

Updated as of 27 Aug 2021 (11:27 AM Central Daylight Time)

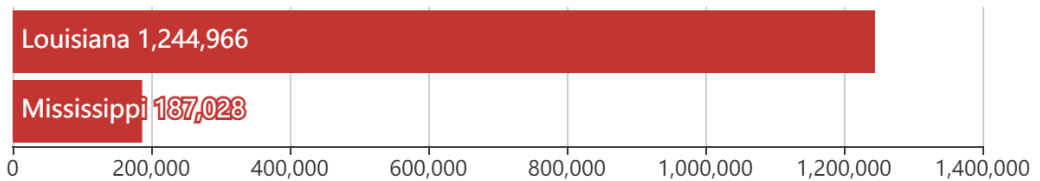
Debris



Population



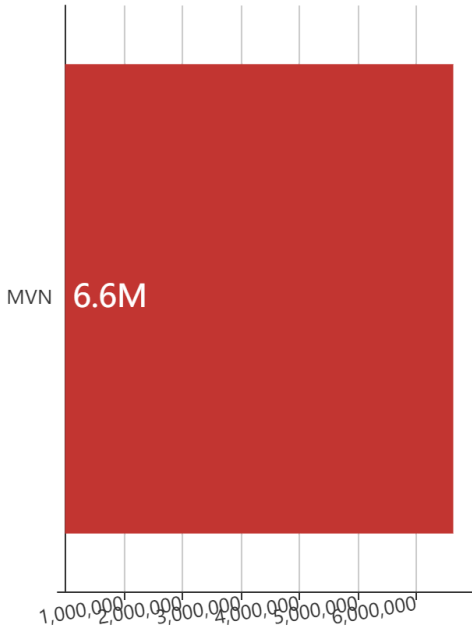
Households



Mission Model Summary

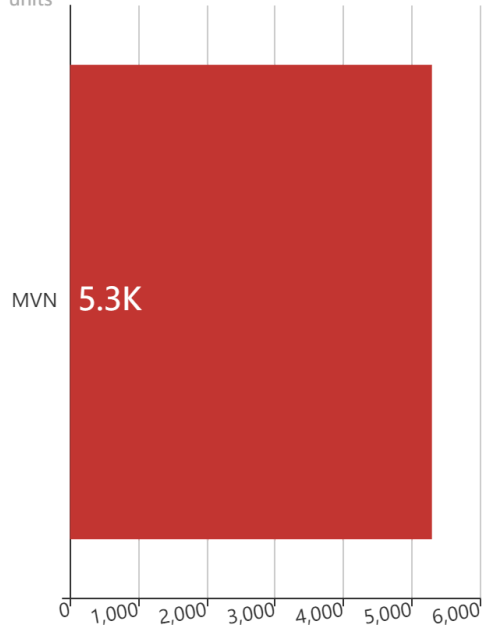
Debris By USACE District

cu. yd.

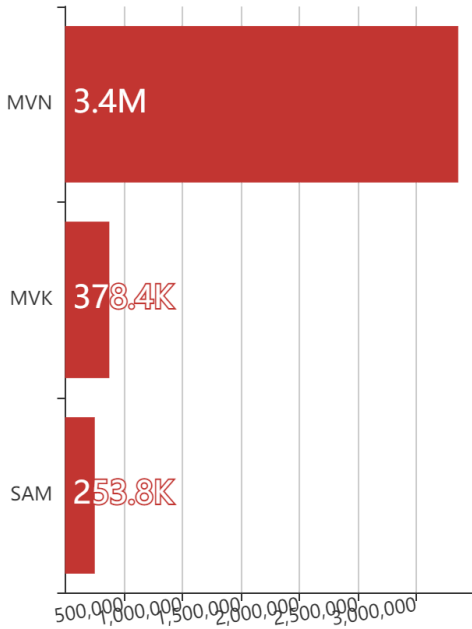


Est. Temp. Roofing By USACE District

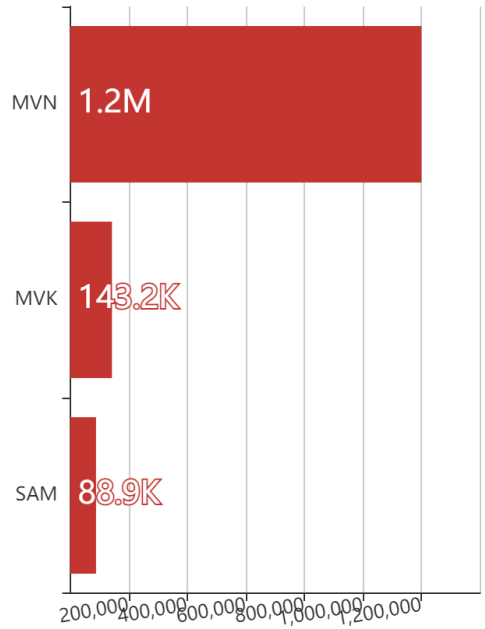
units



Population By USACE District



Households By USACE District



Critical Infrastructure Summary

Total

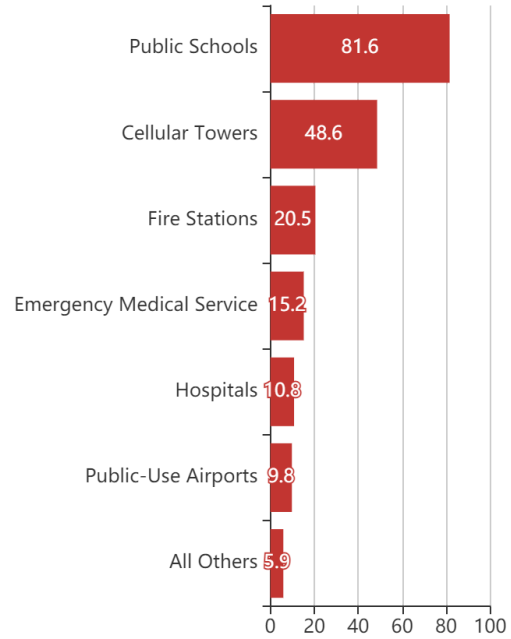


Power Requirements



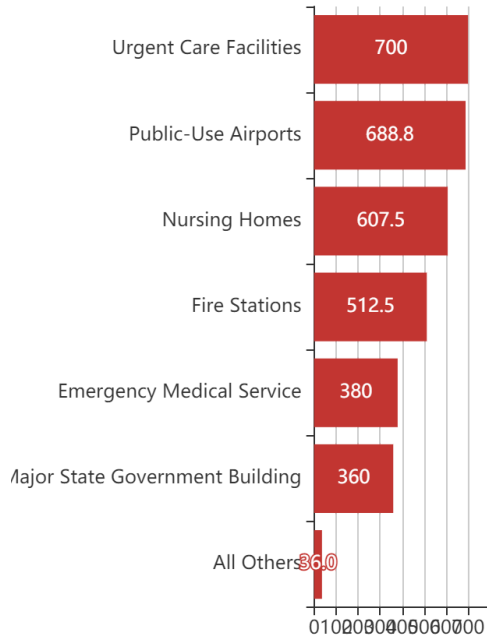
Generators

By Generator Count



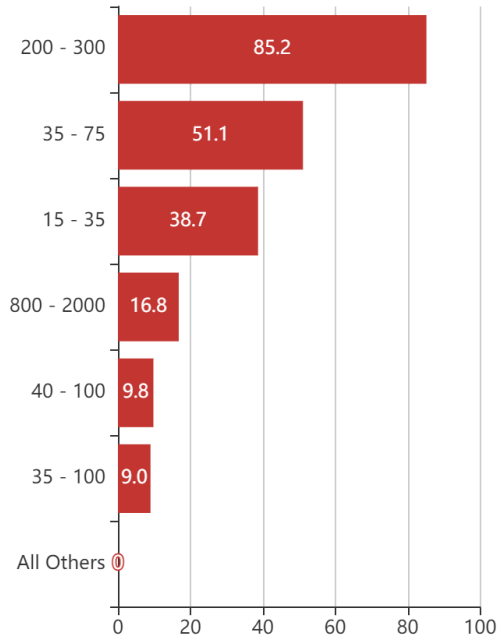
Generators

By Power Requirement



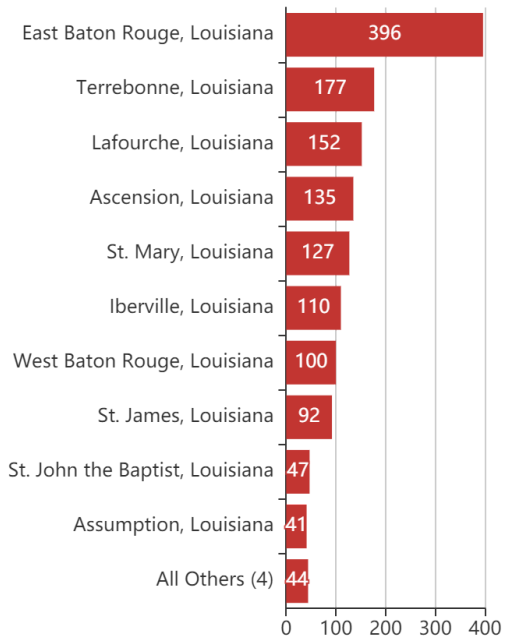
Generators

By Range



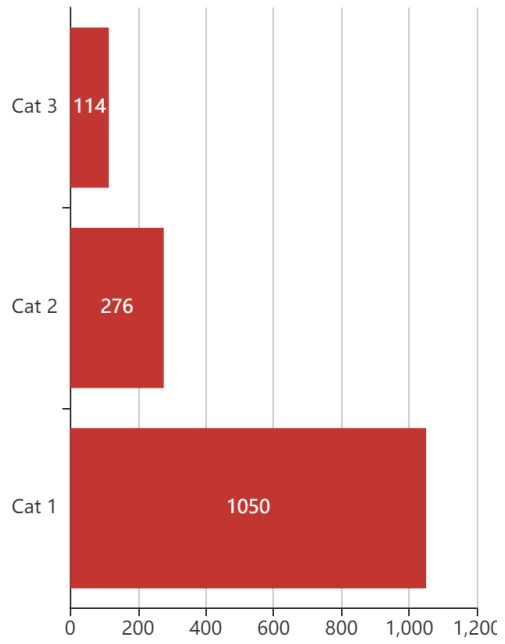
Structures

By County



Structures

By Intensity





Key Messages for Tropical Storm Ida

Advisory 5: 11:00 AM EDT Fri Aug 27, 2021



1. Life-threatening storm surge and hurricane conditions are expected later today and tonight in portions of western Cuba, including the Isle of Youth, where a Hurricane Warning is in effect. Life-threatening heavy rains, flash flooding and mudslides are expected across Jamaica, the Cayman Islands, and western Cuba, including the Isle of Youth.

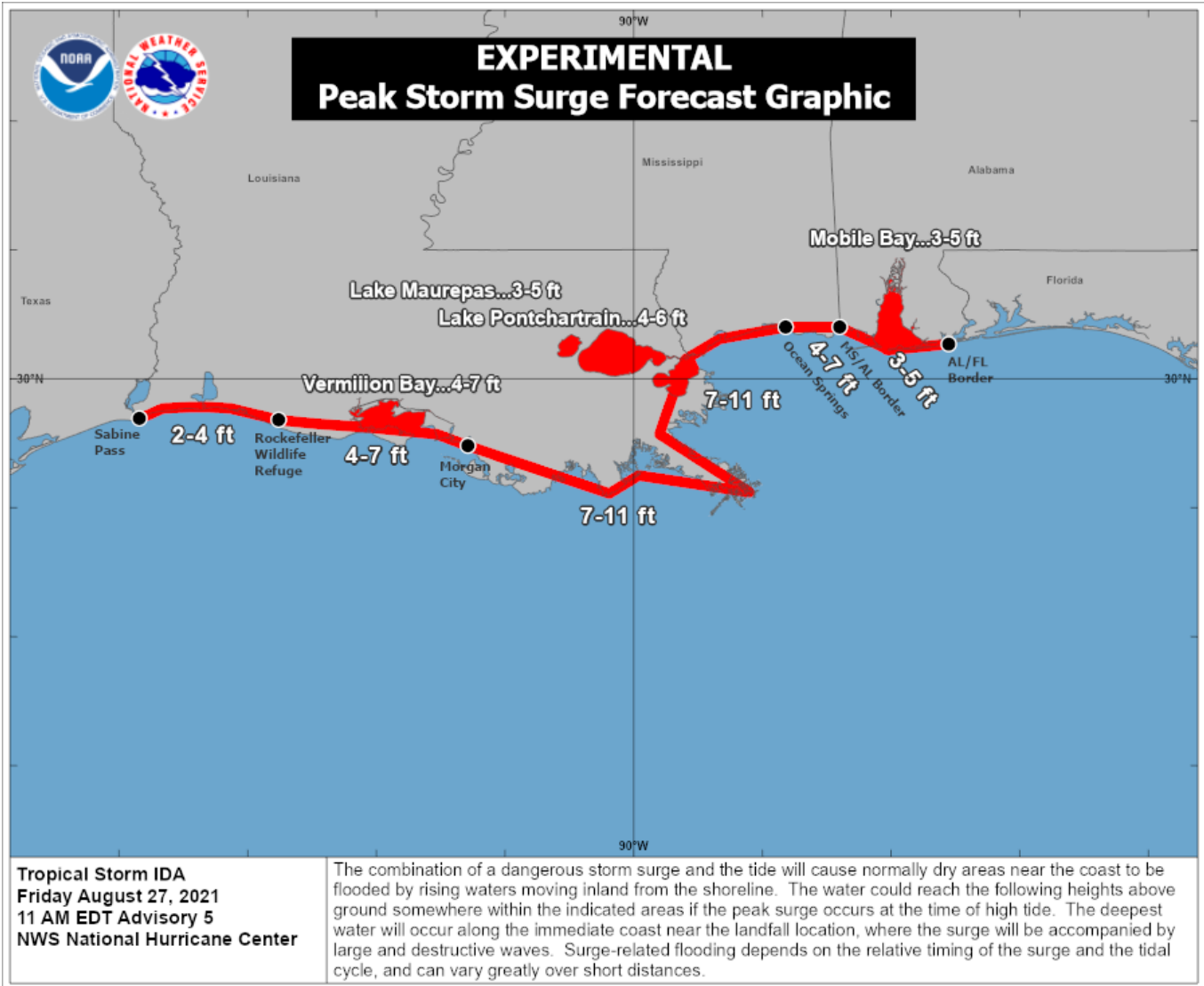
2. The risk of life-threatening storm surge inundation is increasing along the coasts of Louisiana, Mississippi, and Alabama. Inundation of 7 to 11 feet above ground level is possible within the area from Morgan City, Louisiana, to Ocean Springs, Mississippi, including Lake Borgne. Interests in these areas should follow any advice given by local officials.

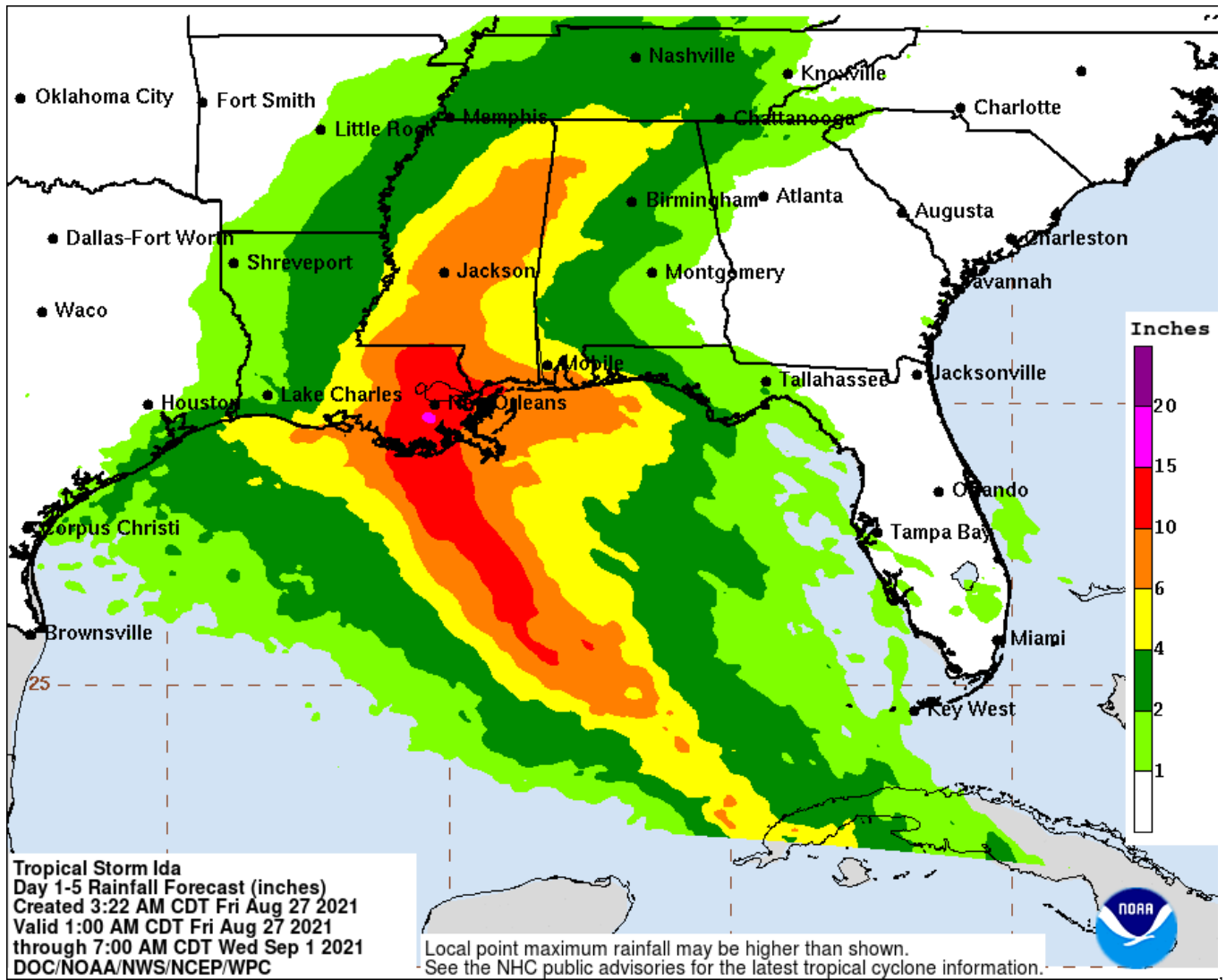
3. Ida is expected to be a dangerous major hurricane when it reaches the northern Gulf Coast on Sunday, and the risk of hurricane-force winds continues to increase, especially along portions of the Louisiana coast, including metropolitan New Orleans. Potentially devastating wind damage could occur where the core of Ida moves onshore.

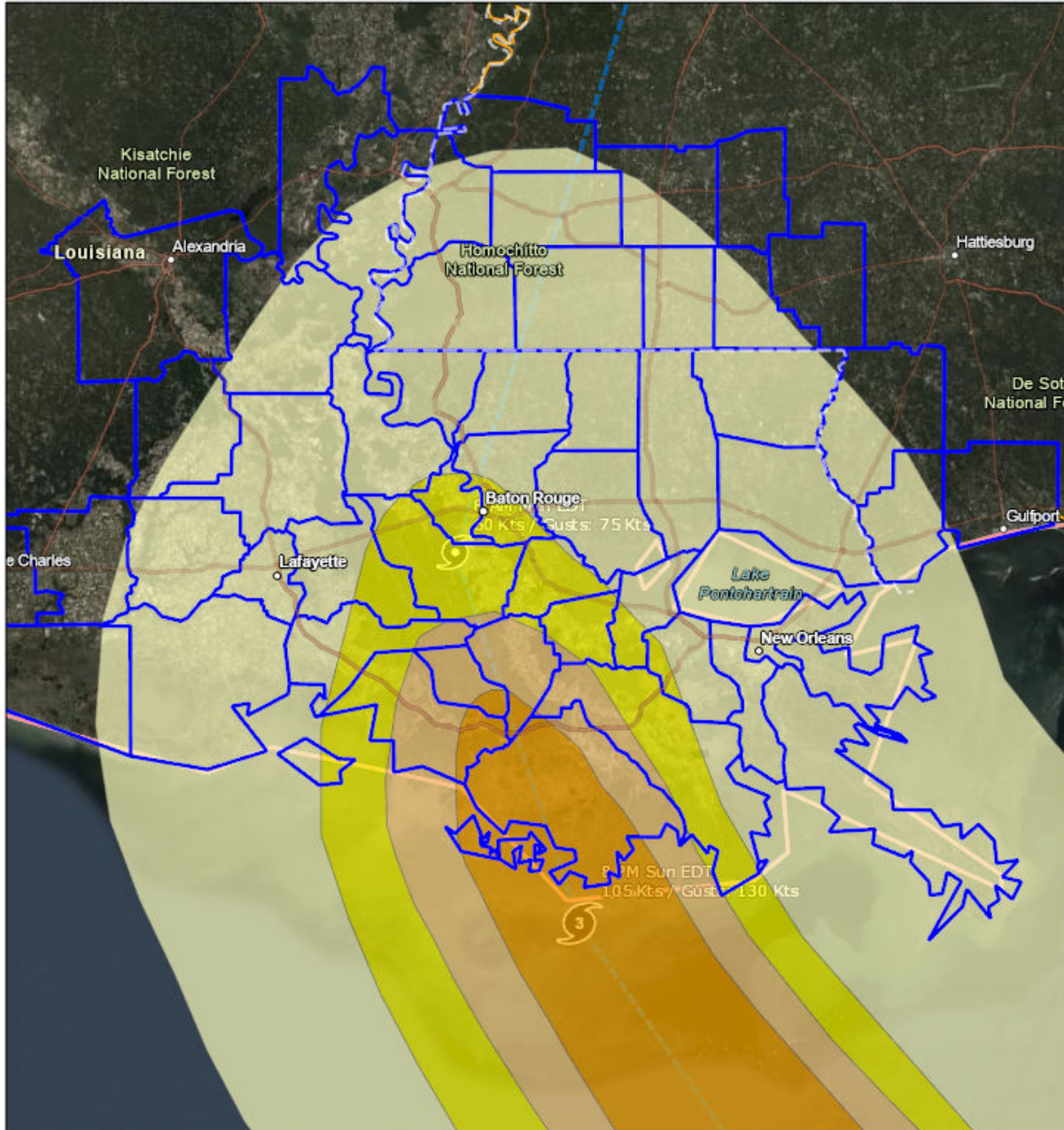
4. Ida is likely to produce heavy rainfall later Sunday into Monday across the central Gulf Coast from southeast Louisiana to coastal Mississippi and Alabama, as well as the Lower Mississippi Valley, resulting in considerable flash, urban, small stream, and riverine flooding.



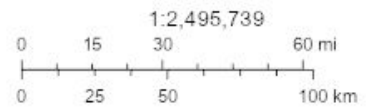
For more information go to hurricanes.gov







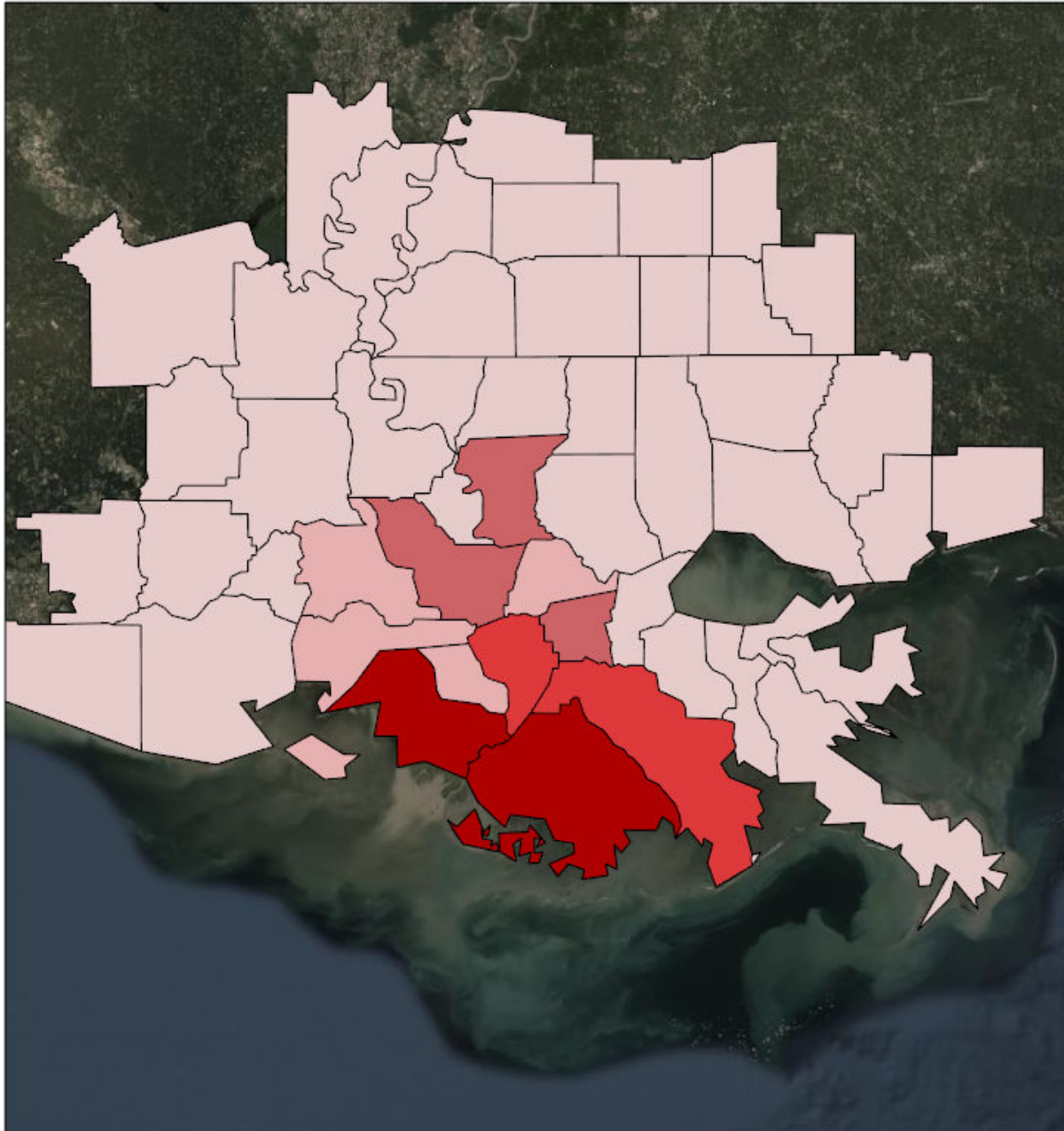
- Counties
- State Boundaries
- Mission Model Swaths
 - TS
 - Cat 1
 - Cat 2
 - Cat 3
- Tropical Cyclone Observed Surface Wind Swath
 - Observed (Best Track) Winds \geq 34 knots (39 mph)
 - Observed (Best Track) Winds \geq 50 knots (58 mph)
 - Observed (Best Track) Winds \geq 64 knots (74 mph)
 - Observed (Best Track) Track Line
 - Observed (Best Track) Center Position






Source: NOAA, Esri, Esri, HERE, Garmin, FAO, NOAA, USGS, EPA, NPS, Esri, DigitalGlobe, GeoEye, Earthstar Geographics, CNES/Airbus DS, USDA, USGS, AeroGRID, IGN, and the GIS User Community

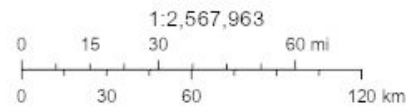
Created by SimSuite

Debris



Debris

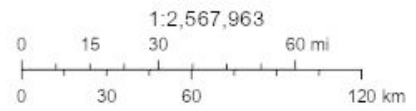
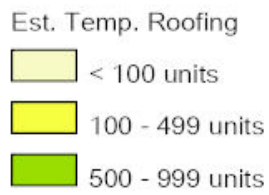
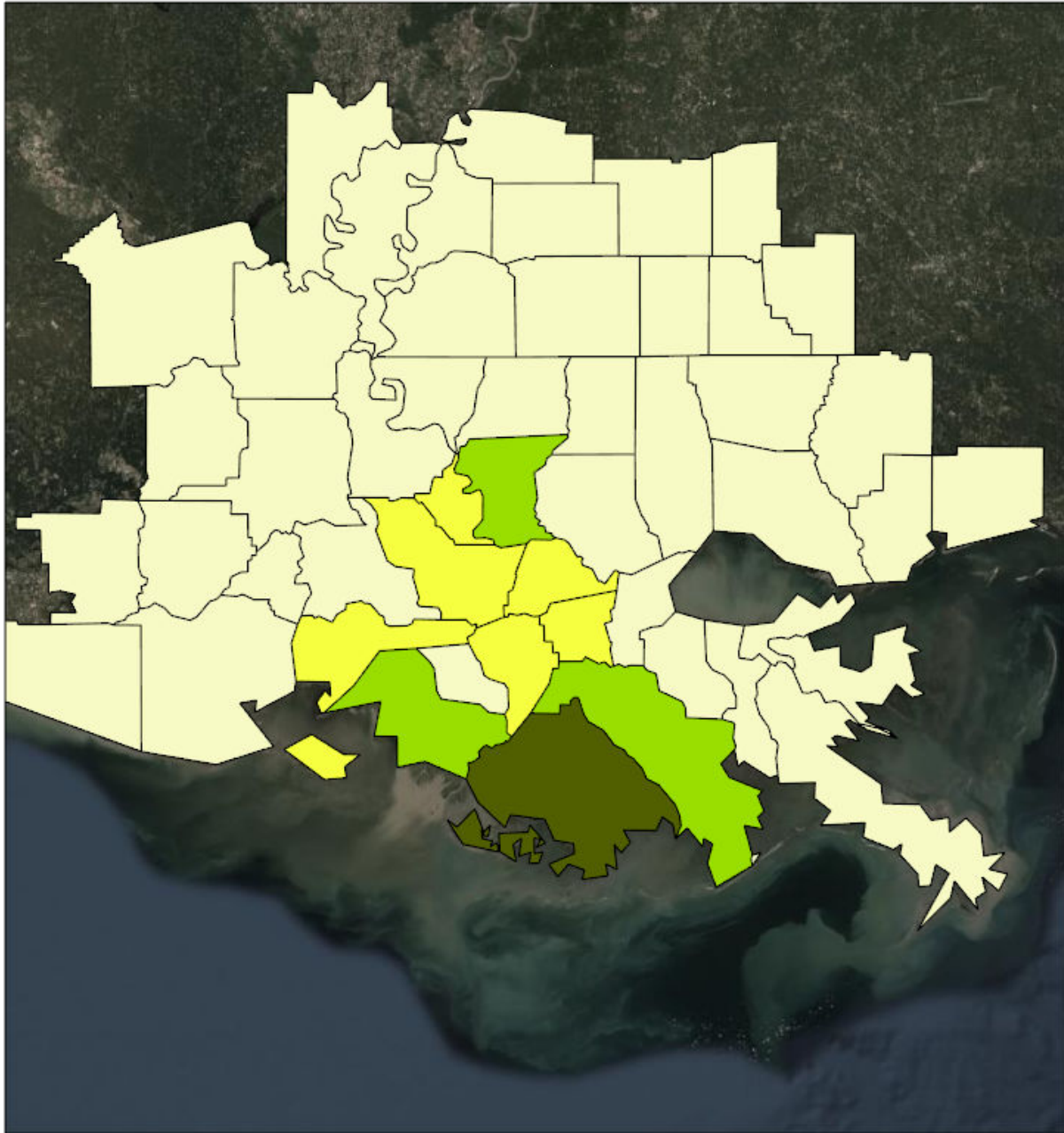
-  < 100,000 cubic yards
-  100,000 - 249,000 cubic yards
-  250,000 - 499,999 cubic yards
-  500,000 - 999,999 cubic yards



Source: Esri, DigitalGlobe, GeoEye, Earthstar Geographics, CNES/Airbus DS, USDA, USGS, AeroGRID, IGN, and the GIS User Community

Created by SimSuite

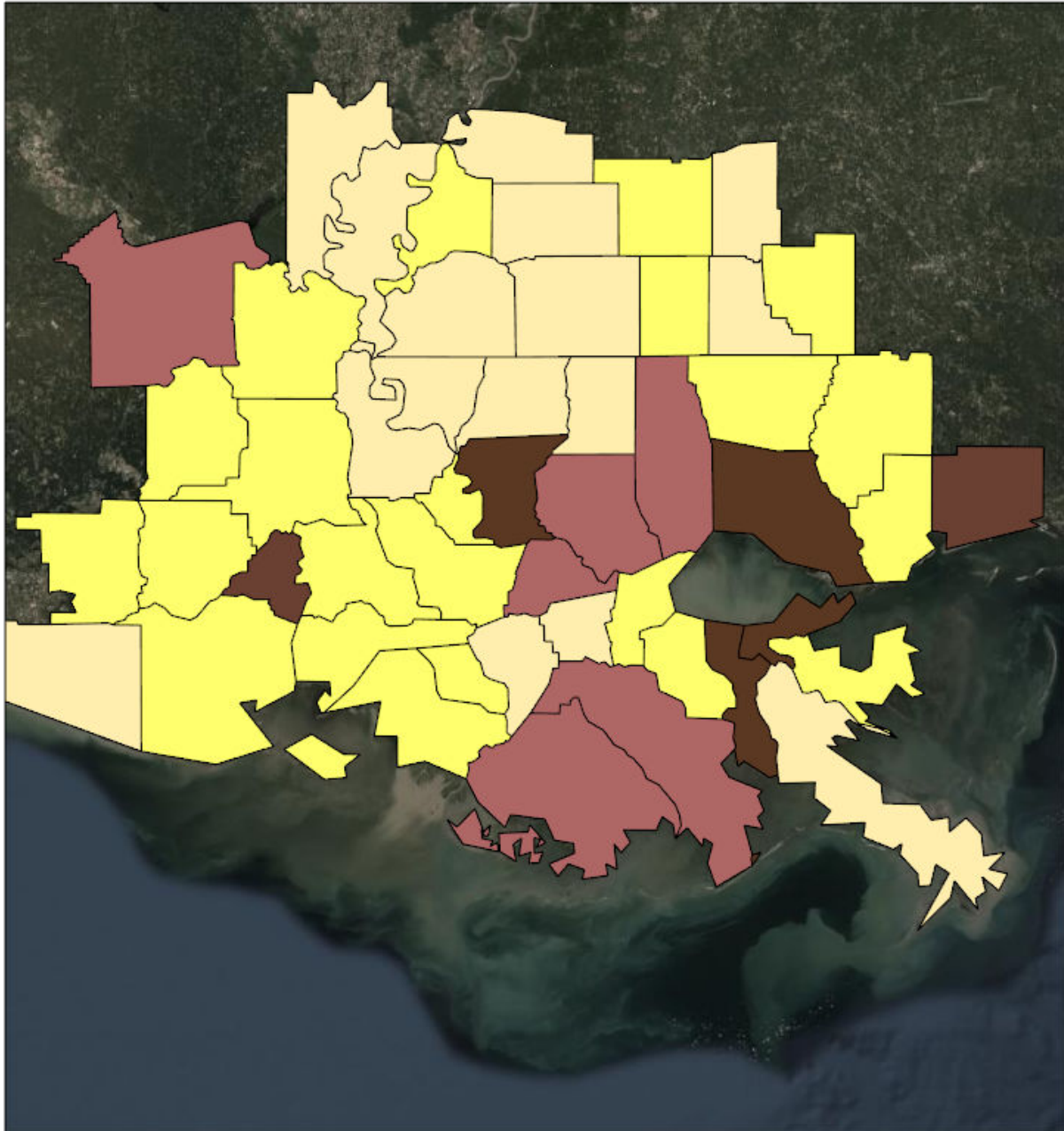
Est. Temp. Roofing



Source: Esri, DigitalGlobe, GeoEye, Earthstar Geographics, CNES/Airbus DS, USDA, USGS, AeroGRID, IGN, and the GIS User Community

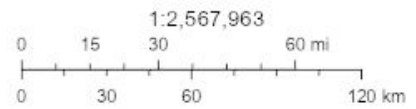
Created by SimSuite

Population



Population

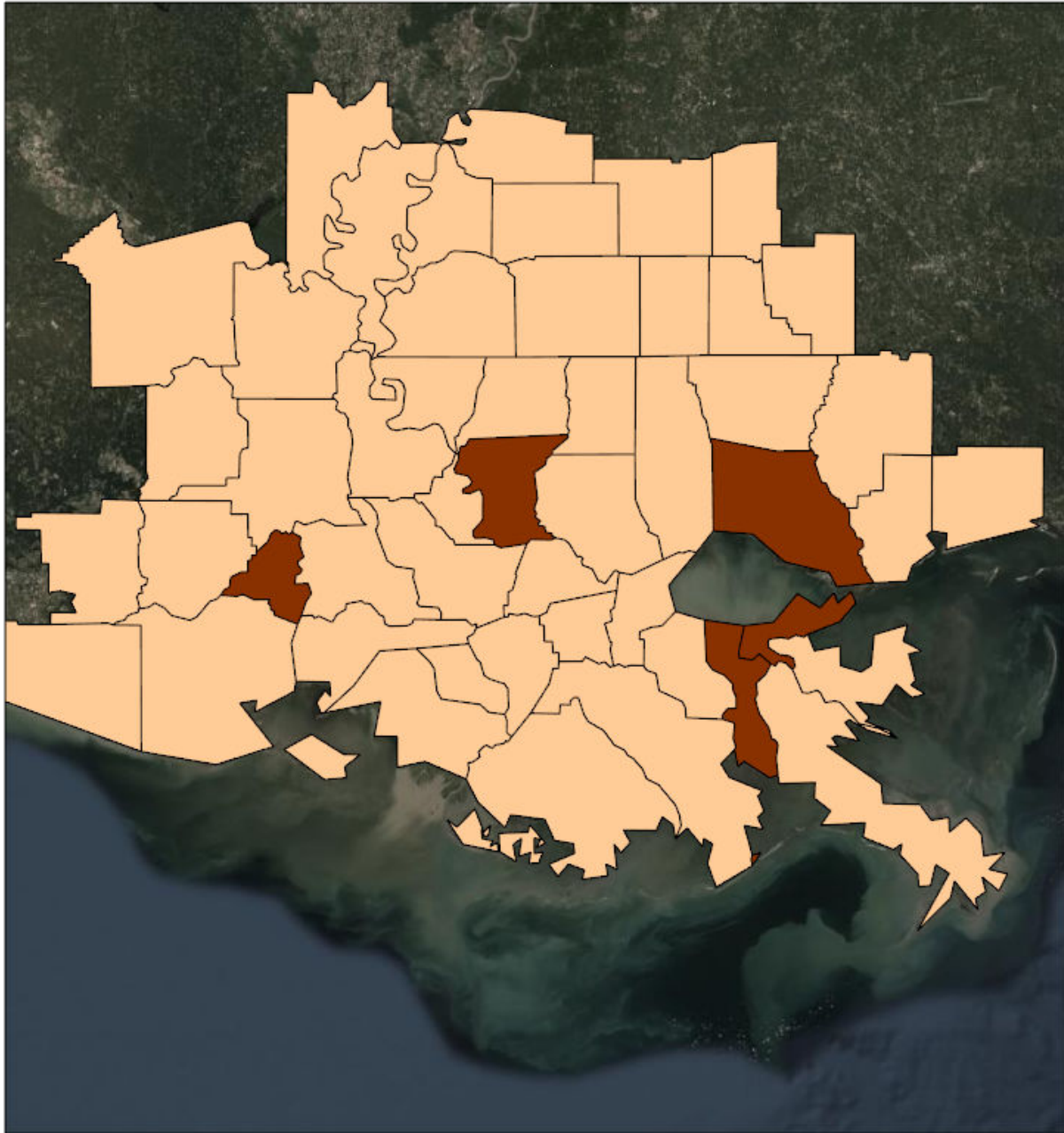
- < 25,000 persons
- 25,000 - 99,000 persons
- 100,000 - 174,999 persons
- 175,000 - 249,000 persons



Source: Esri, DigitalGlobe, GeoEye, Earthstar Geographics, CNES/Airbus DS, USDA, USGS, AeroGRID, IGN, and the GIS User Community

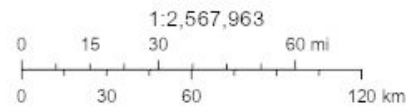
Created by SimSuite

Households



Households

- < 7,500 Households
- 15,000 - 24,999 Households
- 25,000 - 49,999 Households



Source: Esri, DigitalGlobe, GeoEye, Earthstar Geographics, CNES/Airbus DS, USDA, USGS, AeroGRID, IGN, and the GIS User Community

Created by SimSuite

Mission Summary



The mission models account for storm surge and wind damage only, but do not account for other related storm hazards that may affect the mission estimates.

Mission Summary	
Total Counties	49
Debris (cu. yd.)	6,628,623
Est. Temp. Roofing (units)	5,296
Act. Temp. Roofing (units)	1,748
Population	3,988,794
Households	1,431,994
Population Distribution	
Tropical Storm	2,751,002
Category 1	505,508
Category 2	112,054
Category 3	100,077

LOUISIANA	Yds of Debris (6,628,623)	Est. Roof Units (5,296)	Act. Roof Units (1,748)	Population (3,479,412)	Households (1,244,966)
Acadia	0	0	0	64,233	22,841
Ascension	171,163	480	158	124,274	37,790
Assumption	512,010	292	96	24,326	8,736
Avoyelles	0	0	0	43,493	15,432
Cameron	0	0	0	7,408	2,575
Catahoula	0	0	0	10,384	3,834
Concordia	0	0	0	20,789	7,613
East Baton Rouge	326,056	916	302	455,183	172,057
East Feliciana	0	0	0	20,133	7,022
Evangeline	0	0	0	35,225	12,829
Iberia	203,647	257	85	74,654	26,778
Iberville	294,709	157	52	34,675	11,072
Jefferson	0	0	0	436,044	169,647
Jefferson Davis	0	0	0	33,324	11,771
Lafayette	0	0	0	249,487	87,027
Lafourche	764,635	549	181	102,036	35,486
Livingston	32	0	0	142,761	46,007
Orleans	0	0	0	378,952	142,158
Plaquemines	143,326	0	0	24,106	8,077
Pointe Coupee	879	2	1	22,931	9,082
Rapides	0	0	0	138,904	50,401
St. Bernard	0	0	0	42,016	13,221
St. Charles	15,922	45	15	55,762	18,557
St. Helena	0	0	0	11,008	4,333
St. James	264,095	122	40	22,785	7,717
St. John the Baptist	28,162	79	26	46,127	15,965
St. Landry	0	0	0	85,834	31,857
St. Martin	170,494	71	24	55,795	19,216
St. Mary	1,529,826	597	197	54,463	20,457
St. Tammany	0	0	0	259,212	87,521
Tangipahoa	0	0	0	133,414	45,135
Terrebonne	2,162,600	1,612	532	116,998	40,091
Vermilion	0	0	0	61,784	21,889
Washington	0	0	0	48,152	18,113
West Baton Rouge	41,067	115	38	26,881	8,688
West Feliciana	0	0	0	15,859	3,971

MISSISSIPPI	Yds of Debris (0)	Est. Roof Units (0)	Act. Roof Units (0)	Population (509,382)	Households (187,028)
Adams	0	0	0	31,160	12,643
Amite	0	0	0	12,545	5,351
Franklin	0	0	0	8,081	3,211
Hancock	0	0	0	48,810	17,380
Harrison	0	0	0	205,027	71,476
Jefferson	0	0	0	7,644	2,929
Lawrence	0	0	0	13,333	5,078
Lincoln	0	0	0	35,319	13,296
Marion	0	0	0	26,158	10,135
Pearl River	0	0	0	56,827	20,816
Pike	0	0	0	40,438	15,370
Walthall	0	0	0	14,801	5,888
Wilkinson	0	0	0	9,239	3,455

Critical Infrastructure

Summary			
Total Critical Facilities		1,440	
Power Requirements (kW)		52,209.8	
Range (kW)			
Communications	# FED Gen Req	Range (kW)	Req kW
AM Antennas (14)	0.7	35 - 75	38.5
Cellular Towers (81)	48.6	35 - 75	2,673.0
FM Antennas (36)	1.8	35 - 75	99.0
Education	# FED Gen Req	Range (kW)	Req kW
Private Schools (72)	0.0	200 - 300	0.0
Public Schools (272)	81.6	200 - 300	20,400.0
Colleges and Universities (39)	0.8	200 - 300	195.0
Emergency Services	# FED Gen Req	Range (kW)	Req kW
911 Call Centers (0)	0.0	15 - 35	0.0
Emergency Medical Service (152)	15.2	15 - 35	380.0
Fire Stations (205)	20.5	15 - 35	512.5
Service Providers (0)	0.0	0 - 0	0.0
Healthcare	# FED Gen Req	Range (kW)	Req kW
Nursing Homes (60)	9.0	35 - 100	607.5
Hospitals (36)	10.8	800 - 2000	15,120.0
Urgent Care Facilities (14)	2.8	200 - 300	700.0
Military	# FED Gen Req	Range (kW)	Req kW
Air National Guard (ANG) Sites (0)	0.0	15 - 35	0.0
Army National Guard (ARNG) Sites (10)	0.0	15 - 35	0.0
National Security Government Military Facilities (65)	0.0	15 - 35	0.0
Law Enforcement	# FED Gen Req	Range (kW)	Req kW
Prison Points (19)	3.8	400 - 600	1,900.0
Local Police (26)	2.6	15 - 35	65.0
State Police (4)	0.2	15 - 35	5.0
Correctional Facilities (0)	0.0	400 - 600	0.0
State and Local EOC	# FED Gen Req	Range (kW)	Req kW
Local Emergency Operations Centers (11)	2.2	15 - 40	60.5
State Emergency Operation Centers (EOCs) (1)	0.2	15 - 35	5.0

State Facilities	# FED Gen Req	Range (kW)	Req kW
Governors Mansion (1)	0.0	100 - 200	0.0
Major State Government Building (24)	2.4	100 - 200	360.0

Transportation	# FED Gen Req	Range (kW)	Req kW
Ports (172)	0.0	600 - 1200	0.0
Amtrak Stations (2)	0.0	100 - 300	0.0
Bus Stations (21)	0.0	100 - 300	0.0
Intermodal Terminal Facilities (5)	0.0	100 - 300	0.0
Railroad Stations (1)	0.0	100 - 300	0.0
Public-Use Airports (82)	9.8	40 - 100	688.8

Water	# FED Gen Req	Range (kW)	Req kW
Water Treatment Facilities (0)	0.0	800 - 2000	0.0
Wastewater Treatment Plants (15)	6.0	800 - 2000	8,400.0

COVID-19

#	County	Cases
1	Jefferson	64,561
2	East Baton Rouge	57,766
3	Orleans	42,857
4	St. Tammany	39,229
5	Lafayette	34,529
6	Harrison	28,104
7	Livingston	22,070
8	Tangipahoa	20,767
9	Ascension	19,762
10	Rapides	18,313
11	Terrebonne	17,393
12	Lafourche	16,137
13	St. Landry	12,258
14	Iberia	11,040
15	Acadia	9,249
16	Vermilion	8,712
17	St. Charles	8,207
18	St. Mary	7,702
19	St. Martin	7,560
20	Pearl River	7,218
21	Washington	6,877
22	St. Bernard	6,260
23	Hancock	6,160
24	Avoyelles	6,131
25	St. John the Baptist	5,723
26	Iberville	5,416
27	Evangeline	4,938
28	Pike	4,660
29	Lincoln	4,658
30	East Feliciana	4,212
31	West Baton Rouge	4,115
32	Jefferson Davis	4,092
33	Adams	3,910
34	Marion	3,545
35	Plaquemines	3,519
36	Pointe Coupee	3,498
37	Assumption	3,304
38	St. James	2,993
39	Concordia	2,769

40	Lawrence	1,809
41	Walthall	1,789
42	Amite	1,683
43	Catahoula	1,547
44	West Feliciana	1,403
45	St. Helena	1,219
46	Franklin	1,009
47	Wilkinson	908
48	Jefferson	811
49	Cameron	776

Report Generated by SimSuite
<https://go.usa.gov/xFumG>